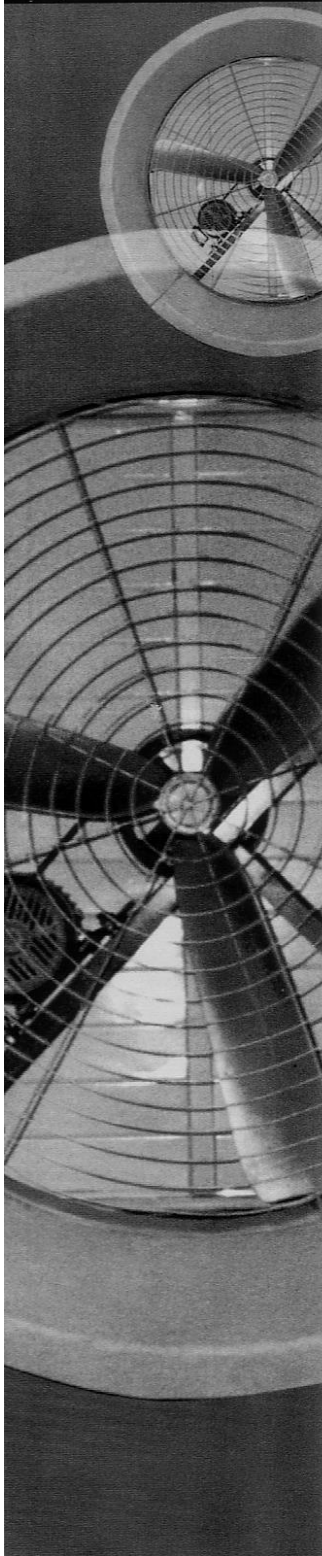


AB HE-48



Air Blowers High efficiency Fan (HE- 48 Series) is an energy saving fan. The HE-48 series is specially designed and developed to provide high airflow performance and for wide area coverage, in both exhaust and supply conditions.

Low operating cost

Guarantee to reduce operating cost. Lower power consumption compared to others (see comparison chart below)

High airflow performance

This is measured in cubic feet of air per minute (CFM) at a specific static pressure (SP). CFM is important because it determines the number of fans required when planning for factory ventilation. A lower capacity fan will result in poor performance, as such factories need to install more fans to achieve required air flow. Hence operating cost and capital cost will increase. Whereas with HE-48 series, the requirements are met without incurring extra cost.

High Efficiency

Air Blowers bellmount discharge cone is capable of increasing airflow up to 17% without using additional power. (24,000 CFM to 28,000 CFM an additional of 4,000 CFM F.O.C.)

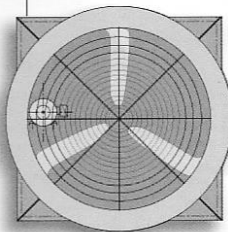
Reliability

For the past 8 years Air Blower had been committed and dedicated in conducting research and development on high efficiency fans in the air moving equipment field. To assure our customers on the reliability of our product, we provide full 2 years limited warranty.

Durability

AB HE-Series casing / Discharge cone is made of reinforced plastic (F.R.P) to withstand corrosive environment and adverse condition.

Comparison Chart of 1 Unit HE-48 (1.1kw)



60 units of 24" Turbine Ventilator

6 units of 19" Fan

(4.5kw)

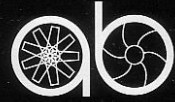
4 units of 24" Fan

(4.4kw)

2 units of 30" Fan

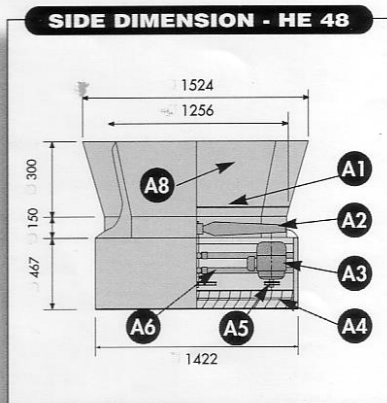
(4.4kw)





Guide to select no. of high efficiency fans required for factory ventilation base on 10 air change / hr

VOLUME OF FACTORY	X	RECOMMENDED AIR CHANGE / hr	÷	DIVIDED BY cfm	=	NUMBER OF FANS REQUIRED
250,000 ft ³		10 Ac/hr		60 min x 28,000 cfm		1 unit
250,000 > 400,000		10 Ac/hr		60 min x 28,000 cfm		2 units
400,000 > 600,000		10 Ac/hr		60 min x 28,000 cfm		3 units
600,000 > 750,000		10 Ac/hr		60 min x 28,000 cfm		4 units
750,000 > 1000,000		10 Ac/hr		60 min x 28,000 cfm		6 units
1000,000 > 1500,000		10 Ac/hr		60 min x 28,000 cfm		8 units
1500,000 > 2000,000		10 Ac/hr		60 min x 28,000 cfm		12 units



Item	Description	Measurement
A1	Fan Guard	∅ 1256 mm
A2	Alluminium Alloy Fan Blade	∅ 48"
A3	Motor	1.5 hp
A4	Fan Guard	51" X 51"
A5	Pulley Single Groove	Motor 4" & Fan 10
A6	Motor Base	
A7	F.R.P. Casing	
A8	F.R.P. Bellmount Discharge Cone	

